

Impact through strategic funding

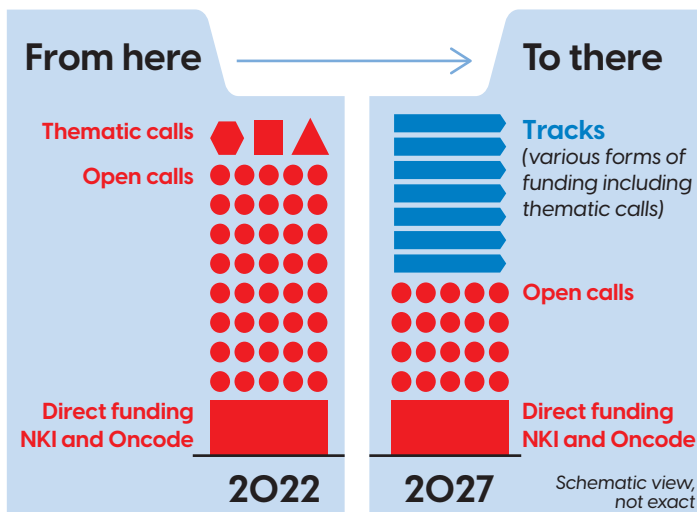
Public donations enable us to fund hundreds of excellent research projects. To further improve impact for patients, we will gradually implement changes to our research funding strategy.

Targeted funding

KWF mainly funds research in open calls and within our programmes for Proof of Concepts and Public-Private Partnerships.

We will continue these programmes. But to better align our research portfolio with our mission goals, we are also implementing a more targeted, long-term funding approach aimed at specific themes.

These themes are called 'tracks'. Tracks have been identified and will be further developed in close collaboration with the oncological field.



Tracks

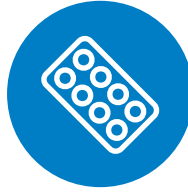
We have identified tracks in 4 clusters:



**Prevention
Environmental
Lifestyle factors**



**Early detection
and Minimally
invasive techniques**



Cancer drugs



**Quality
of life**

Funding opportunities

Each track will have long-term funding available to achieve track goals. Depending on the needs and capacity within the research field, different types of funding will be available for each track.

Some of these funding types are new and still in development. These new, targeted funding opportunities allow us to maximize the impact of every donation received.



Please visit [kwf.nl/research](https://www.kwf.nl/research) for the most up-to-date information about funding opportunities, tracks, and more.

